



www.lagniappepeddler.com

“Love Me Tender I-Pad Bag”

Description: This pattern was designed for your electronic device or IPAD and is a cut/sew as you go. This unstructured style of sewing utilizes remnant pieces and what is on hand to create fun projects. The pieces needed are cut as the bag is sewn along allowing the crafter to have a free hand while designing. It is very simple and would make a great gift for that person who loves Elvis! Even if you don’t have an electronic device, this bag would be excellent to hold a drawing pad and markers, a shopping list and coupons or make-up because it is fairly thin and when opened stays flat. *Fabric utilized is trademarked and for personal use only*



Finished Bag



The materials needed are:

1 yard printed fabric— for your outside (Elvis print on this bag)

3/4 yard coordinating fabric for the inside and details (Music notes print on this bag)

12 in x 12 in Matching SOFT towel

1 yard washable felt or thin batting for the lining

Matching Thread

Velcro

Decorative Button

Heavy duty or denim needle

All seams are 5/8 in





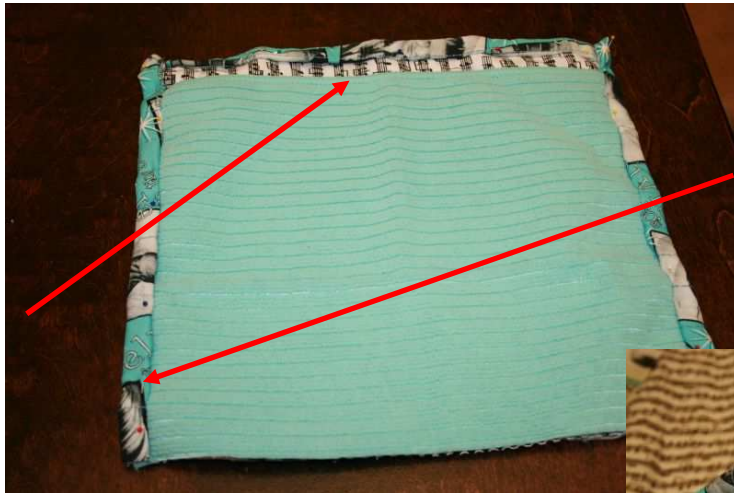
Wash and dry your fabric and towel per the recommended material settings. Iron on low. Cut 2 fronts, 2 backs and 2 linings each 12 inch by 12 inch

Layer your inside, lining and outside on top of each other right sides out to create 2 sides of your bag. You will be quilting the layers first. You can choose to quilt them in one direction only or go across both ways. It is your preference.



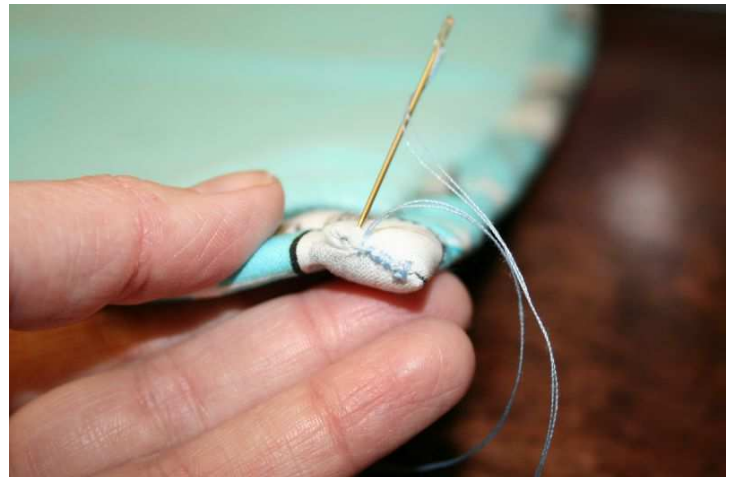
Front and Back Layers are quilted





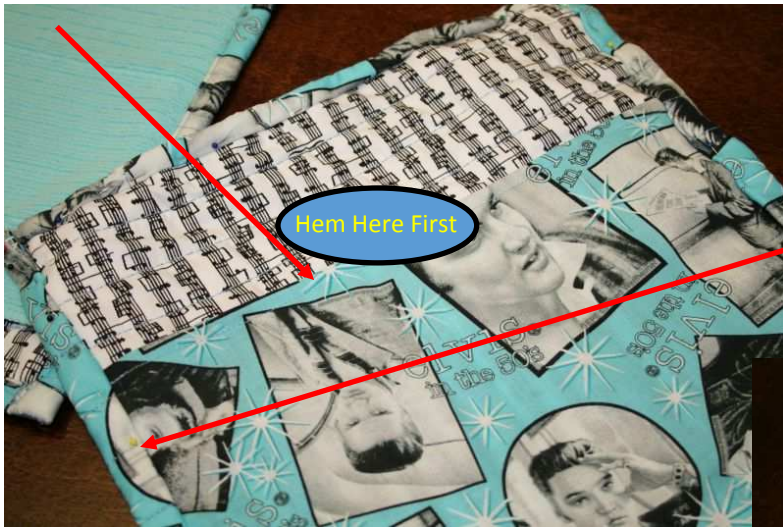
Cut approximately 2 inches off one side of your towel. This will be the inner pocket for the electronic device as it is soft. Lay the towel on top of one of the insides and begin to pin a hem around three sides of the perimeter. You will "catch" the ends of two sides of the towel in your hem

Your sides are pinned and ready to sew with the pocket top open



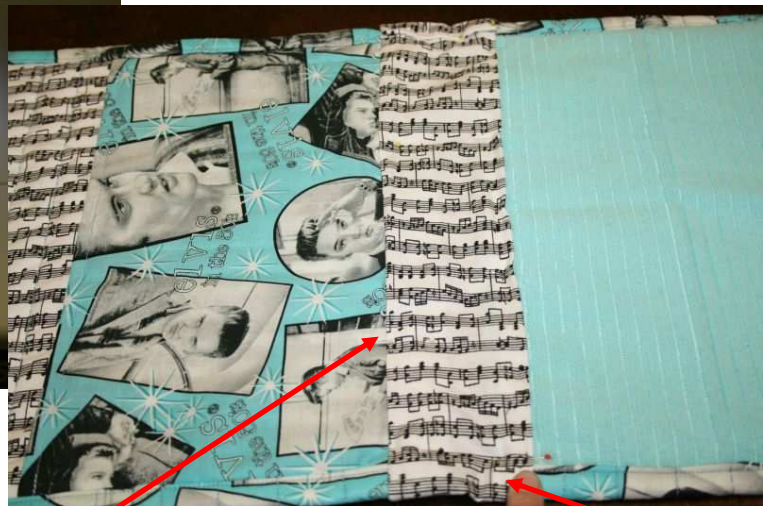
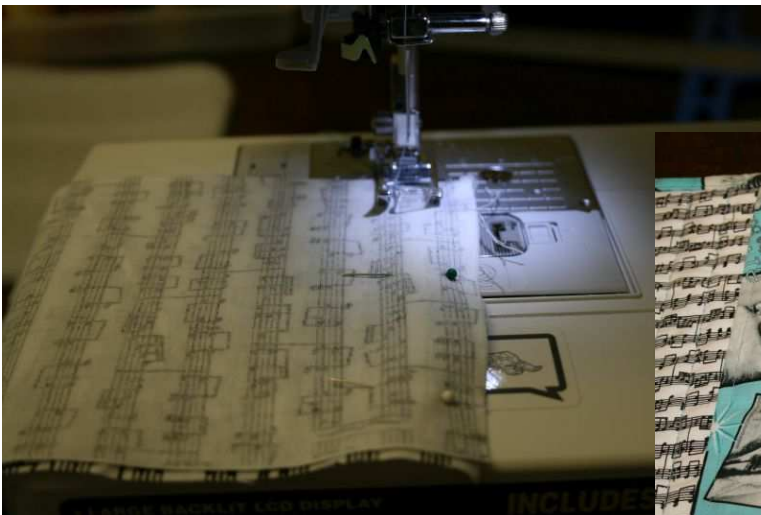
The corner of your hem will be very thick and you can hand finish the corner if your machine has difficulty sewing it





You will create an inner pocket for the other side now. Cut a piece of the outer fabric 9 in x 12 in. Hem one side of the fabric piece first and then lay it on top of the inner piece and create a perimeter hem just like you did on the previous piece catching the sides of the pocket material. Sew the perimeter hem. If the corners are too thick for your machine, you can hand sew those.

Now you will sew your middle that will connect the front to the back as well as house your glasses/pen holder. Cut two pieces of your coordinating fabric approximately 4 in x 12 in. You will lay those pieces right sides together and sew around the perimeter leaving a little open so you can turn it.



Once sewn and turned right side out, lay your front and your back on your work surface so the pockets are facing upward and then lay the middle piece right on top of each edge slightly overlapping. Pin a hem on the top and bottom of the middle piece to match your front and back.





Your middle piece is pinned here and the overlapping seam is being sewn along with the hem on top and bottom



Your bag is getting really close now!





Now you will make your handles. Cut two pieces of your outer fabric 4 in x 12 in and two pieces of your batting or felt 3 in X 11 in. This will make sewing the hems easier if your batting is a little smaller than your outer fabric.

Fold the long ends of your fabric over into your center. Fold sides inward again so it looks like a tube.



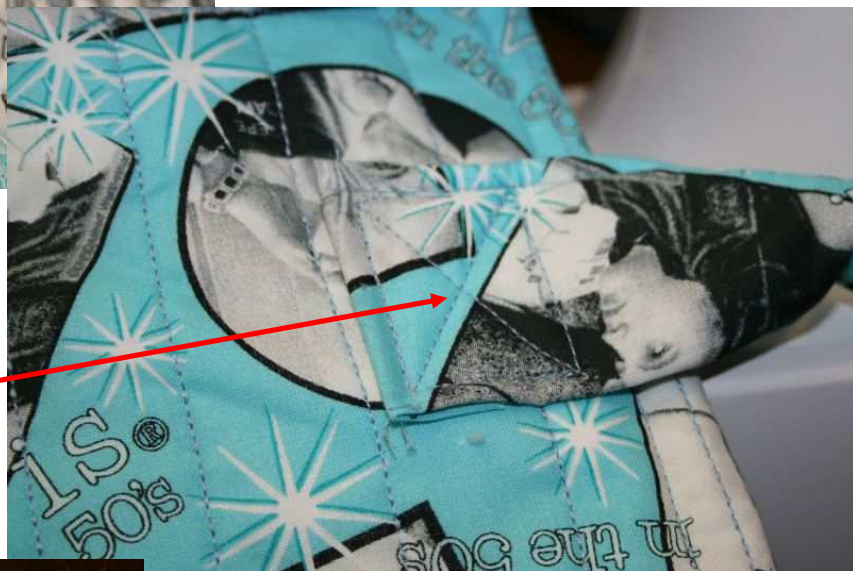
Sew on one side of the tube to create a handle. Sew only to within 2 inches of each end so you have a flat piece to attach to the bag.





Make sure to fold your inner pockets down before you attach your handles so you don't accidentally catch them in your seam.

Attach the ends of your handles to the bag by folding under and creating a hem. Make sure to finish with an X to make the handle stronger.



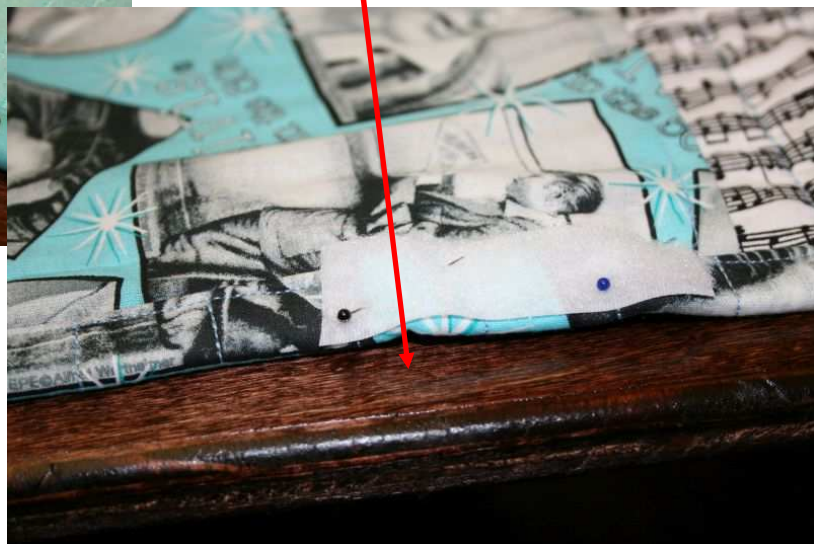
Now you will sew your flap that will keep the bag secured. Cut one piece of your inner fabric 3 in x 8 in. Also cut a small piece of lining fabric 1 in x 6 in. Lay the lining fabric on the coordinating fabric on the wrong side with one of the edges lined up. Turn up the long sides of the fabric to create a tube and sew a seam around three sides making sure you catch the edge of the lining fabric. Turn the tube right side out. The lining should stay inside the tube once turned.

Take the open end of your tube and fold the ends into the tube like a gift package so the raw edges are sealed. Sew around the perimeter and quilt if you want to.





Place your Velcro pieces on the inner pockets by pinning and sewing.



Sew Velcro to the outer bag and the flap. Then attach the flap to the outside of the bag like the handles.





Velcro placed on the inner pockets

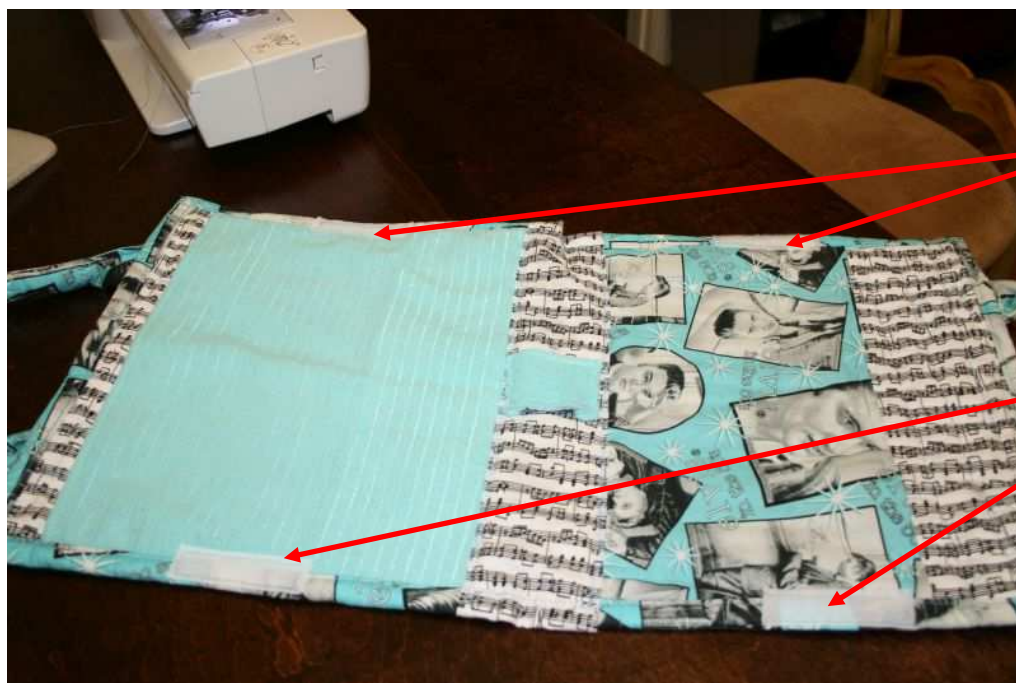
Cut a small piece of the towel remnant
2 in x 4 in to sew a pen / glasses holder.

Fold under the raw edges and hem



Fold the sides under and sew the
pen / glasses holder on each end
to the inside middle of the bag.





Extra Velcro is sewn on the top and bottom of the bag to make sure items secured in the pockets don't slip out.

Sew a Beautiful Button for decoration on the flap



Your bag is complete and ready to hold all of your electronic items including stylus pens and glasses.



Enjoy!

