



“PJ Puppy Pattern”

www.lagniappepeddler.com

Description: This pattern was designed using kid’s pajamas that are too small for your child but still in good shape. The PJ’s in the example are special because they have the ability to connect to a mobile app that reads bedtime stories to the child. What a great use of outgrown PJ’s!



Materials needed:

1 set child’s knit pajamas with long sleeves and long legs (Example is about a size 4)

(the size of the PJs determines the size of the stuffed animal)

4-6 Misc socks for the feet, hands and ears

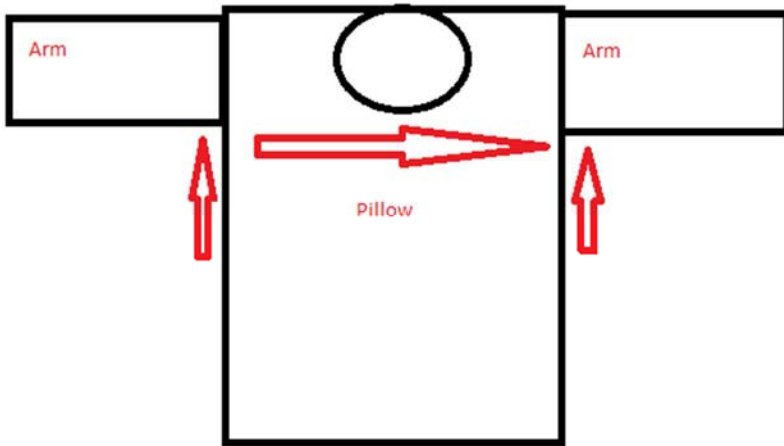
Washable felt for the face and nose (2 colors)

Large bag Fiberfill to stuff the toy

Google eyes, pom pom nose, embellishments, tulle, matching thread



Pajama Top



The first thing is to make sure your PJs are washed and dried so they are clean. You will begin by cutting the shirt into pieces.

The body of the shirt will become the pillow that the stuffed animal can hold.

Find a good place under the arm seams and cut straight across making a square or rectangle. Put that aside. Then cut the arms off the shirt below the arm seam.

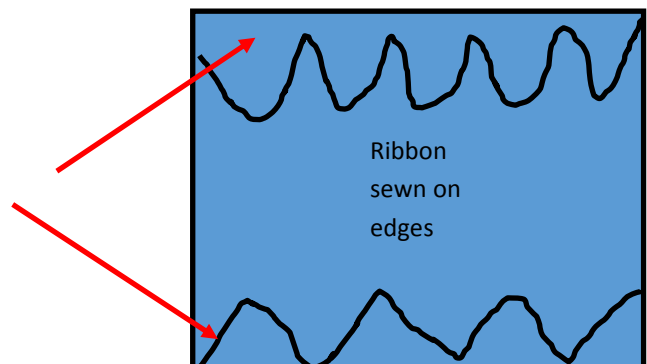
These will be the arms for the stuffed animal.

You can flip the cut square inside out and sew all the unfinished sides leaving a hole for turning and then stuffing for a simple pillow that the animal will hold and your child can cuddle with. If you want to add embellishments like the example, you can insert lace or ribbon around the perimeter. Pin it to the fabric and sew. Hand sew your opening



Pillow turned inside out and ribbon pinned facing the center along the edges of the fabric and the ribbon.

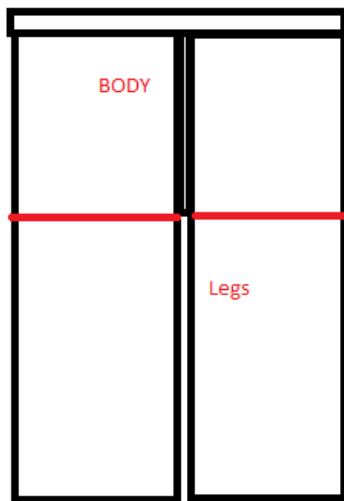
Sew around the perimeter of the pillow and leave a hole for turning. When you turn the pillow the ribbon will be facing outside





Next you will work on the hands and feet of the animal. Take four socks and cut off the toes to a length that will become the hands and feet .

You will turn the ends of the pants up and hand sew the feet directly to the pants. If you roll the pants up into a cuff and sew a few inches into the length it will be easier. Do the same thing with the sleeves you cut off the shirt. Turn all of them down after the hands and feet are attached and you won't see the stitches. It will create a continuous tube that you can begin stuffing from the legs up to the crotch area. Stuff the hands and the arms to the length that you will want the finished product to be. If you want a bend in the arms, you can partially stuff them and then sew a seam across to make an "elbow"



Pajama Bottoms

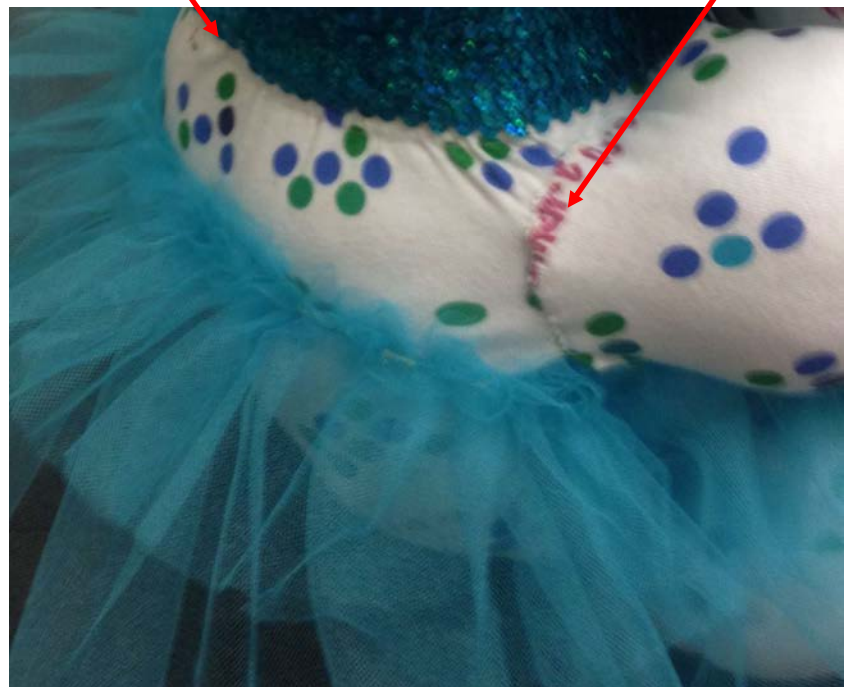
See from the diagram that the legs will remain legs but there will be a seam across the area of the crotch. This can be sewn on your machine if you move the stuffing down into the legs a bit. It can be moved back up after sewn. The area that would normally be the bum of the pajama bottom will become the body. Once the seam is done you can continue to stuff the body area.



This picture shows a back view of what becomes the body. You can see the area that was the waistband and you can see where you will now begin to work on the arms after stuffing them. They will be hand sewn to either side of the body or the "bum" of the PJs.

waistband

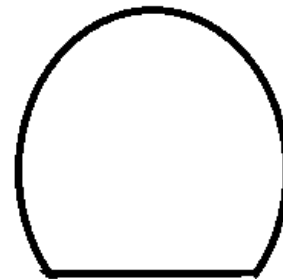
Sew arms to body





At this point you should have a pillow and a stuffed animal body complete with a torso, legs and arms. On our example we took the hands and ran a thick piece of thread through them so that they would be in a permanent position together. This way the pillow can be placed under the arms for the animal to hold when your child is not using it.

You will work on the head now. Take your washable felt and cut out two pieces resembling the diagram. This will be your front and back. For the nose we cut four pieces so that when we sewed it we could make it look like it had a smile. There will be a diagram later for the smiling face. If you want to do a simple nose, just cut two pieces. These will all be determined by the size of your pajamas. The head can be measured by using the waistband width and the nose can then be your choice.

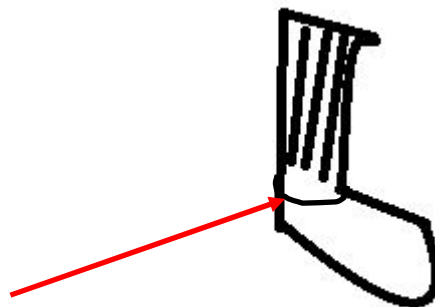


Cut 2 for head



Cut 2 for nose or 4 if you want to make a smile face

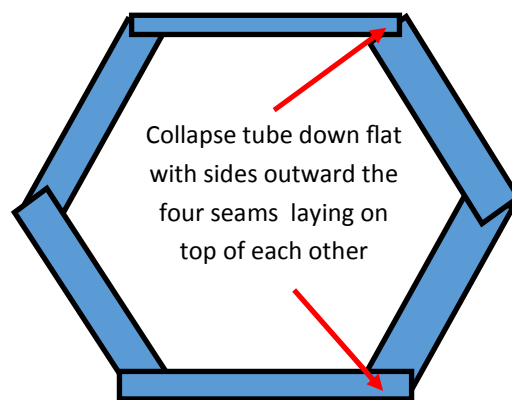
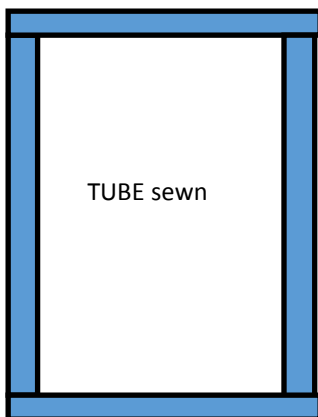
Take the remnants of the socks and flip two of them inside out. Sew a curved seam on one end of each and turn right side out. These will be your ears. You can either stuff them or leave them floppy



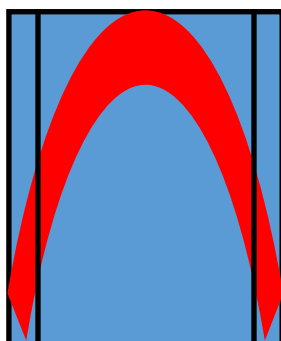


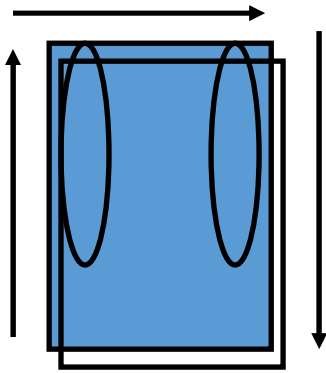
Take your other piece of felt and cut out a rounded rectangle that will be the face. Use your machine and sew a zig zag seam around the felt to attach it to your head front.

For the nose, if you decided on two pieces sew them together by placing right sides together and then turn right side out. If you are making the smiling face, sew all four pieces of your felt right sides together to make a tube.



Once flat, sew a curved seam right on top of the previously stitched areas after the tube is folded down. Trim off any excess to reduce bulk and turn right side out. Your smiling face or nose is ready to stuff.





Now you will take your head back and head front placing them right sides together. You will place your ears inside the two pieces so that when you sew your seam around the perimeter, the ears will be sewn in. Sew around three sides leaving the bottom open. Be careful not to catch the ears in your seam so they will hang freely after you have sewn the head. Turn the pieces right side out. You should be able to stuff the head now. It will make it easier to sew the nose onto the face which will be your next step. Once you have attached the nose to the head, you can add a pom pom to the end of it by hand sewing and glue on some googly eyes. A ribbon on the head can be added also.



Now you will sew a hand seam all around the waistband to connect the head to the body. This will a noticeable seam due to the elastic in the band but we hid the elastic by covering the neck with a decorative piece of fabric that looks like a dog collar once we had the head attached





Now if you want to add any final embellishments to the puppy you can. We took some tulle scraps layered and gathered them into a long skirt then attached with a few whip stitches to the PJs.



This PJ Puppy is strapped into the front seat for delivery to a special little friend!

ENJOY!

