



www.lagniappepeddler.com

“Poly-fil Puffy Elephant Pattern”

Description: This pattern can be found on the back of the manufacturer’s bags of purchased Poly-fil. The following instructions will show step by step color pictures of the possibilities and ease to complete the project.

(This project was showcased to assist anyone desiring more detailed instructions than what are printed on the Fairfield World manufacturer’s bags. No pattern design rights assumed by Lagniappe Peddler)



Poly-Fil Bag Front



Poly-Fil Bag Back

Materials Needed:

Poly-fil and pattern from the rear of the bag

Tracing Paper and a Writing Implement, Wash away marker

Material in the desired fabric type and matching thread (remnants or smaller fabric pieces can be used)

Stabilizer if using an embroidery machine and temporary spray

**If not embroidering use Permanent Markers, Puffy Paint, stamp pads and ink, or buttons for eyes
(heat set the Permanent Markers and ink with your iron)**

Decorative Ribbons and yarn for optional tail if desired

Cutting implements, measuring tools, chopstick from Poly-fil, Iron and Ironing board, Hand Sewing Needle

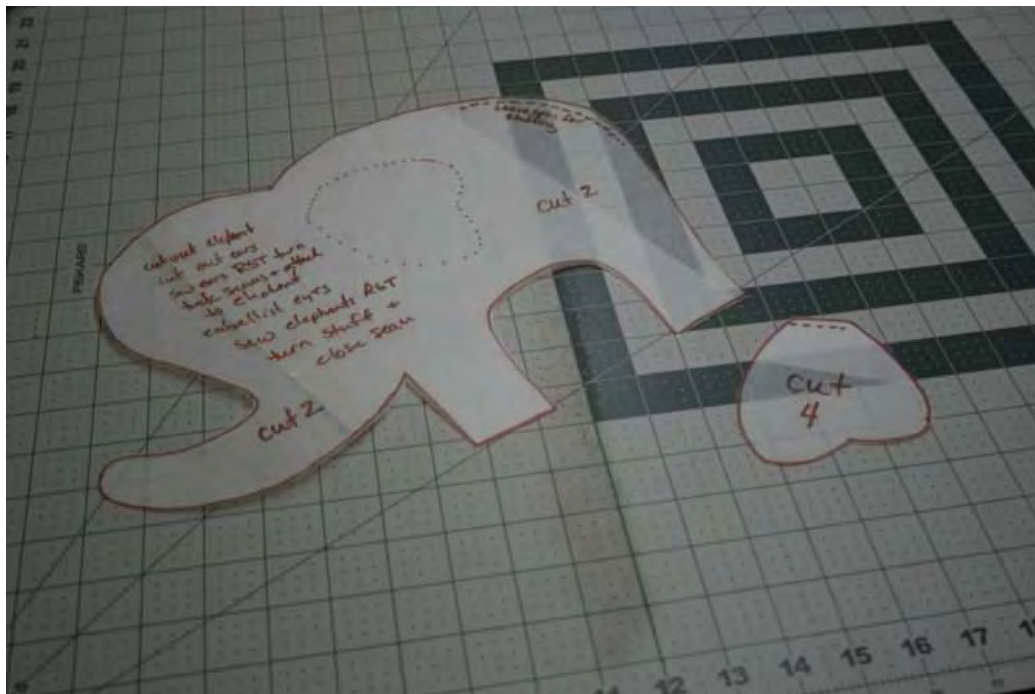
Pins and clips



Completed Puffy Elephants with two different fabrics on either side



Wash and dry your fabric per recommended material settings and iron if needed. Gather your tracing paper and writing implement and transfer the pattern with all markings. This will make it easier to pin to your fabric and cut out.





When you are cutting out your pattern pieces you will have a front and back piece for the elephant body. If your fabric has a right and wrong side you will either have to rotate the pattern or the fabric when you cut out the back. We chose a quilted fabric for the back. When we cut out our front piece from our flannel, you can see we kept the pattern piece face up but we did lay it on the reverse side of the flannel to cut.

You will also have four pieces of cut fabric for the Elephant Ears. Here you can see we are making several Elephants, so we cut everything out at the same time and pinned all of our ear pieces right sides together.



Here is a close up of the ears.





When sewing the ears, we set our needle position far to the right so the seams would be about 1/4 inch and used the edge of our foot to maintain an even stitching line. We began stitching on one side and went all the way to the opposite side leaving the ends open for turning.

You could use a pair of scissors and clip all of the curves, but we used pinking shears instead. See the end has not been sewn or clipped.



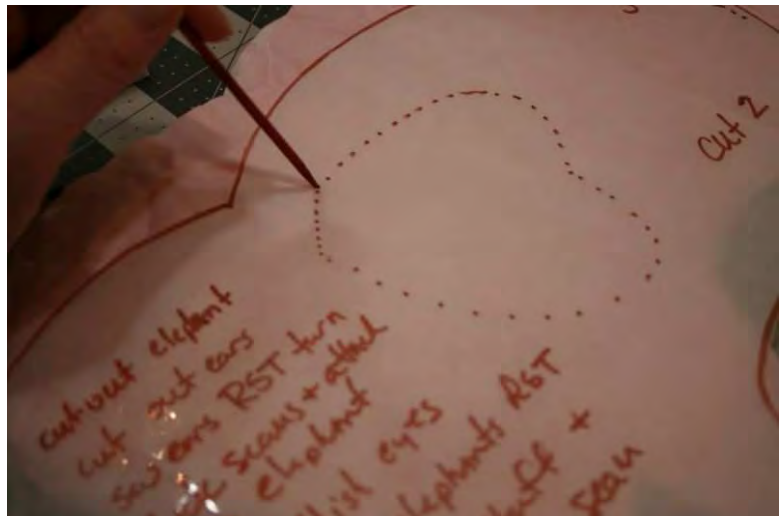
The chopstick that comes in the Poly-Fil Bag makes a great point turner. Don't push too hard as you might pop the seams.





Once turned your ear should lay flat. We used an iron to make sure all of the curves were smooth.

We used a small pointed chopstick to mark the ear placement on the front and back of our elephants. If you used tracing paper and transferred all markings, this is very easy to do by laying the pattern piece over the fabric and poking a small hole in the paper.



A wash away marker can be used to mark the small holes on your fabric pieces





We marked front and back pieces .

Using our iron we turned the open end of each ear under and pressed neatly.



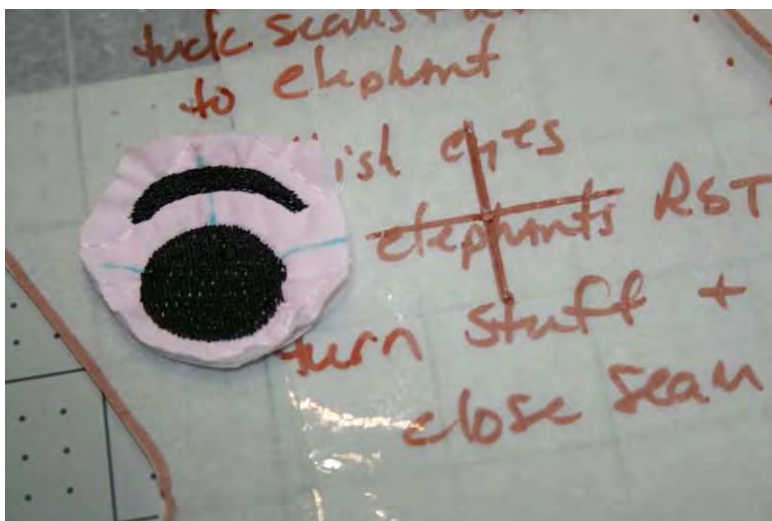
The ears can be pinned in place where you have marked accordingly on the front and back pieces





Topstitching was done on each ear with a 1/4 inch seam. This will attach the ears to the body of the elephant and they will be floppy

We chose to make our elephants eyes with Embroidery software. This picture shows a plain circle and eyebrow digitized. If you don't have an embroidery machine, you could hand embroider an eye on the front and back fabric pieces at this time. There are many other options like buttons, ribbon, permanent markers or puffy paint. If sewing this for small children, keep safety in mind when choosing your eye materials



We did a test stitch of our eye and cut it out. Then we marked the placement with a cross on our pattern piece by auditioning how it looked. This will make it a lot easier if you are going to hoop the fabric so both sides of your elephant look the same. The wash away marker is a perfect solution to make all markings.





We transferred our markings again by poking holes in the pattern piece, using dots and connecting them with a small seam gauge to make sure our cross was straight.



Our fabric was floated on top of our stabilizer with temporary spray. The Elephant fronts and backs were embroidered one after another using the markings to make sure each one looked the same.



The addition of a tail for the elephant is optional as the original pattern does not call for it. If you choose to add one, you can use any kind of ribbon and yarn. We used 1/2 inch grosgrain ribbon cut to 12 inches.





You can use any kind of object to wrap your yarn for the tail end. We chose a small piece of cardboard that was about 3 inches tall and wrapped our yarn 12 times around it.



Fold the ribbon in half and slide one end through the wrapped yarn.



On your sewing machine use a zig zag stitch to sew a square. This will capture the edges of the yarn. Then use your scissors to cut the yarn loops. Now you have a soft fluffy tail.





Now you are ready to assemble the elephant. Place the front and back piece right sides together. Make sure you pin everything well and use the markings from the pattern to leave the tail end of the elephant open when you sew your seam. We used about a 3/8 inch seam allowance to make sure we left enough space when going around the trunk and legs. Anything larger and they may be difficult to turn as well as maintain an even seam allowance around curves. You can see that we clipped our seam all the way around.

Clip your corners also so the edges turn nicely. There is a corner right under the trunk and the front leg that will need to be clipped so the seam releases. Be careful not to cut into any of the seams.



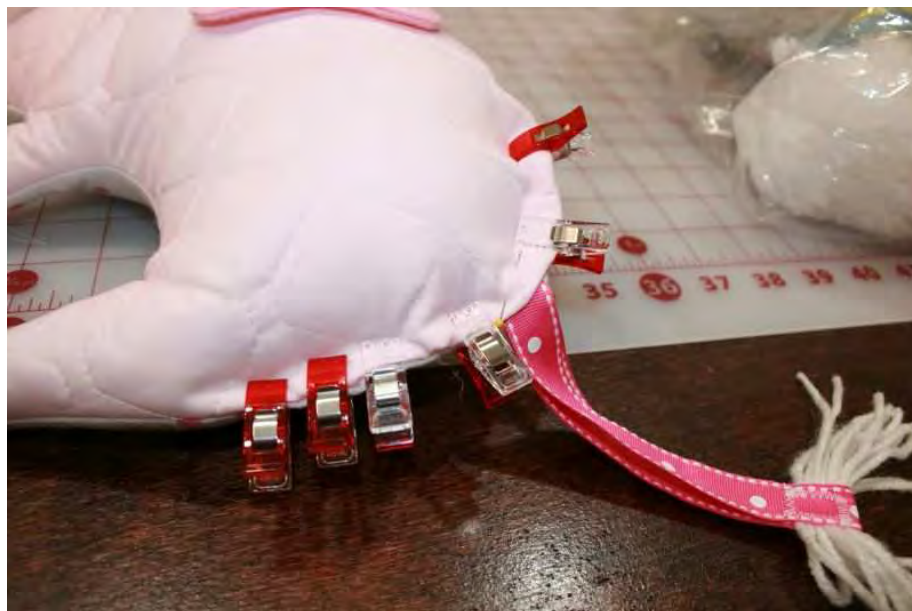
We found using the chopstick once again enabled us to turn our project. We would advise turning the trunk first and then the feet followed by the body. Take your time with the trunk as the end may be very narrow. If you have clipped enough it should make it easier. If you see that there are any areas that pull or don't lay flat enough, simply go back into the seam with an extra clip. You can see our back area is still open ready to stuff and add the tail





Begin stuffing the Elephant. The smaller areas like the trunk and feet can be done first then move on to the body. The chopstick was used to push the Poly-fil into the very end of the trunk. Use as much Filling as you would like but make sure not to overstuff so your seams are pulling.

This view shows our three Elephants are ready to be closed up.



We folded the edges under where the closure was and first pinned the tail where it looked best to us. Then using clips, we aligned the fabric in preparation to hand sew.





You can use whatever hand stitch works best for you. We chose a ladder stitch that would be almost invisible making sure we really anchored the tail so it could not be pulled out easily.

If you used a wash away marker, you can remove the blue ink with a Q tip and some water.





Your Puffy Elephant Project is now complete and ready to keep or give!

These are a really cute and easy project suitable for any level of sewing ability.



ENJOY!

